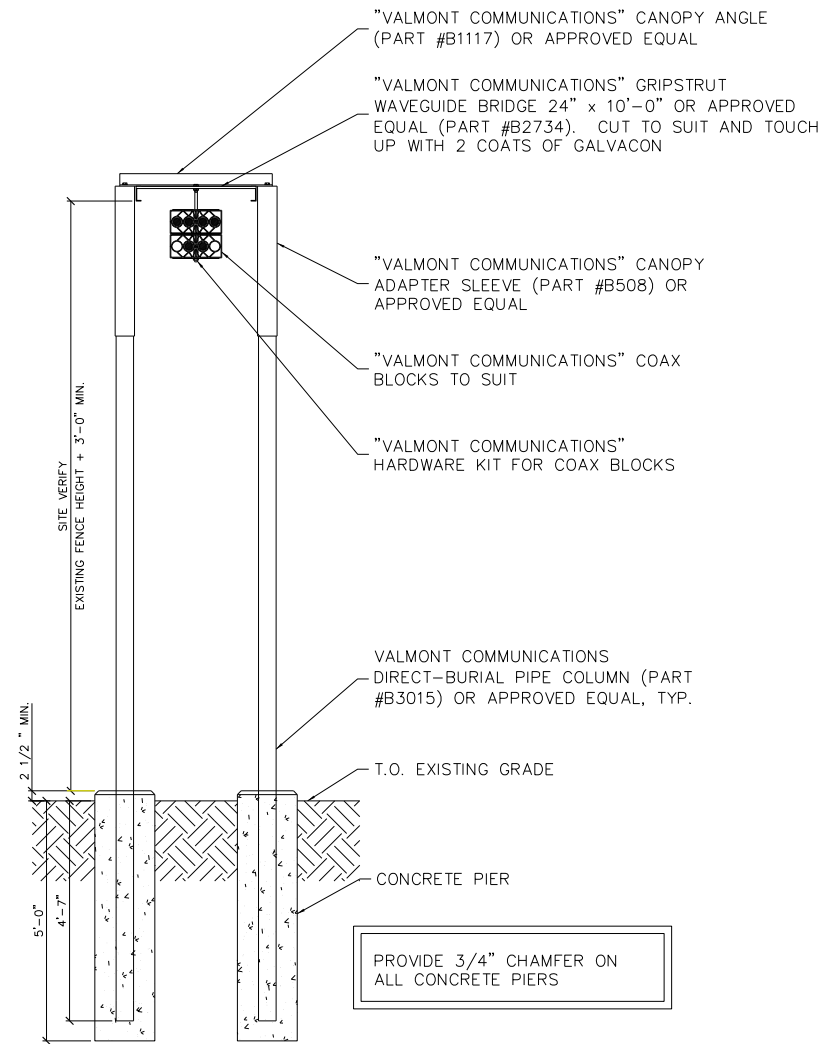
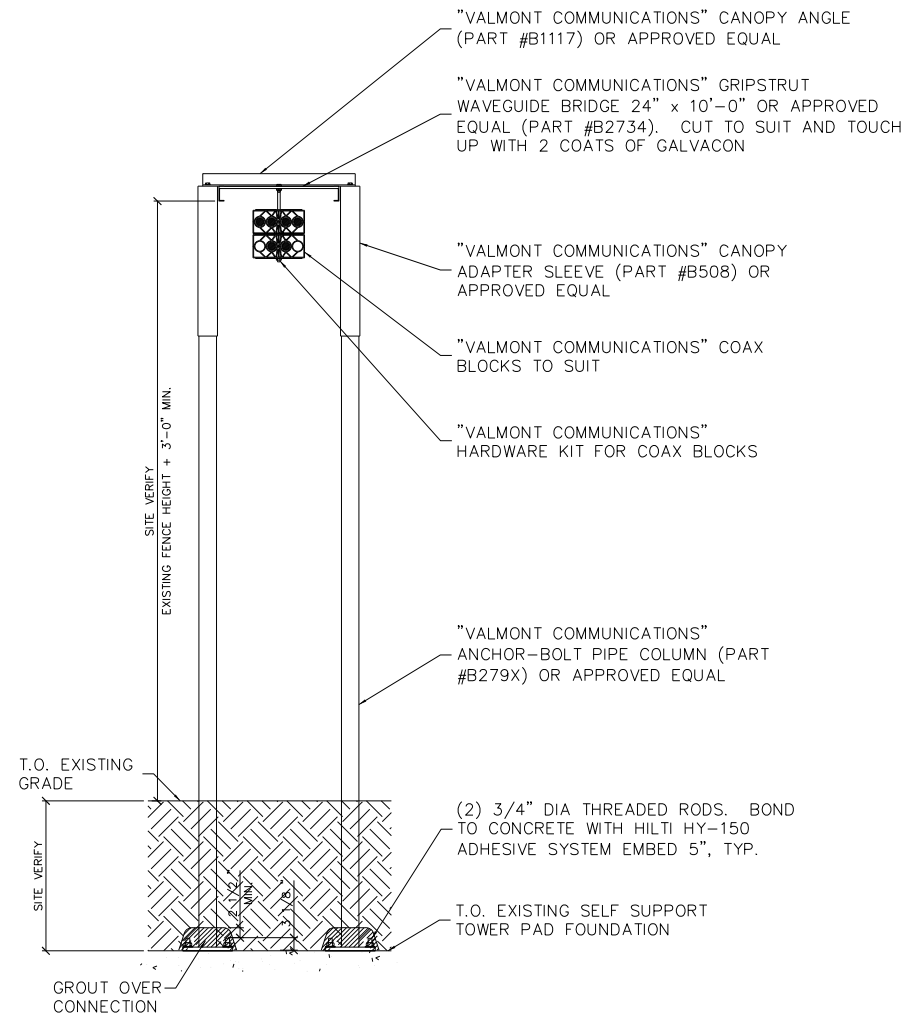


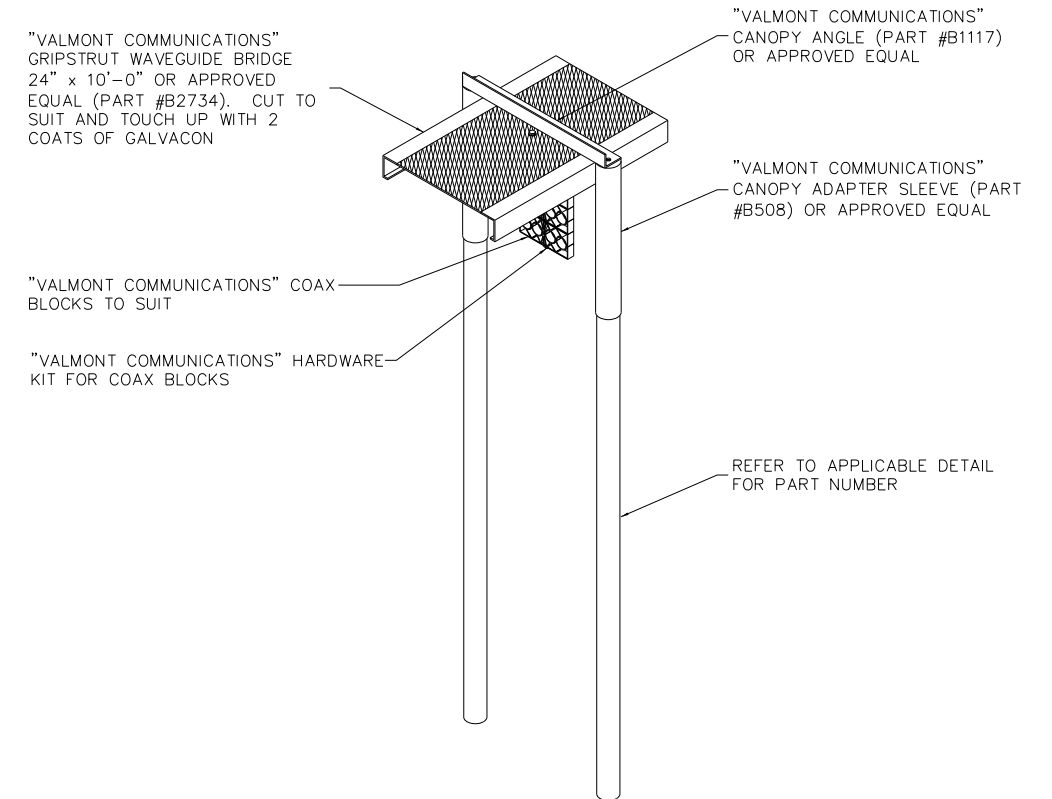
PROVIDE "VALMONT COMMUNICATIONS" CORNER FILLER (PART #B505) AT ALL RIGHT ANGLES)



① WAVEGUIDE BRIDGE PIER DETAIL



② WAVEGUIDE BRIDGE ANCHOR DETAIL



③ WAVEGUIDE BRIDGE ISOMETRIC

GRANGER TELECOM CORPORATION
 22 CORGEY RD., PLEASANTON, TX 78604
 PHONE: (830) 569-8088 FAX: (830) 569-8091

ABC COMPANY FACILITY
WAVEGUIDE BRIDGE DETAILS

CONFIDENTIAL
 THIS PRINT AND THE DESIGN DETAIL SHOWN THEREON IS THE PROPERTY OF GRANGER TELECOM CORPORATION. THIS PRINT IS FURNISHED WITH THE UNDERSTANDING THAT IT IS NOT TO BE REPRODUCED WITHOUT PERMISSION, AND MUST BE RETURNED UPON DEMAND. ALL RIGHTS OF DESIGN ARE RESERVED BY GRANGER TELECOM CORPORATION.

NO	DATE	DESCRIPTION	DWN	CHKD	APP
REVISIONS					

DRAWN DWB	DATE 02/12/2008	SCALE N.T.S.	SHEET 3 OF 4	REV 0
DESIGN DWB	DWG. NO.	CAD FILENAME:		
CHKD SS	PROJECT NO.			
APPR LBT	3000			