

MATCH LINE STA. 2006+35

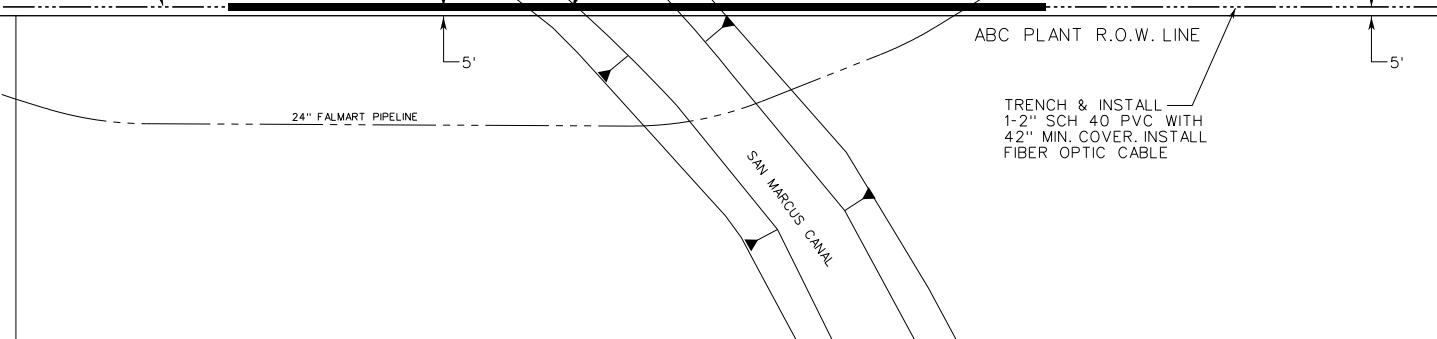
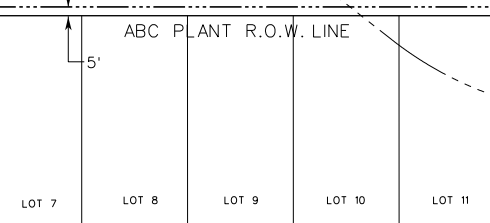
ABC CO. 200' R.O.W.

TRENCH & INSTALL 1-2" SCH 40 PVC WITH 42" MIN. COVER. INSTALL FIBER OPTIC CABLE

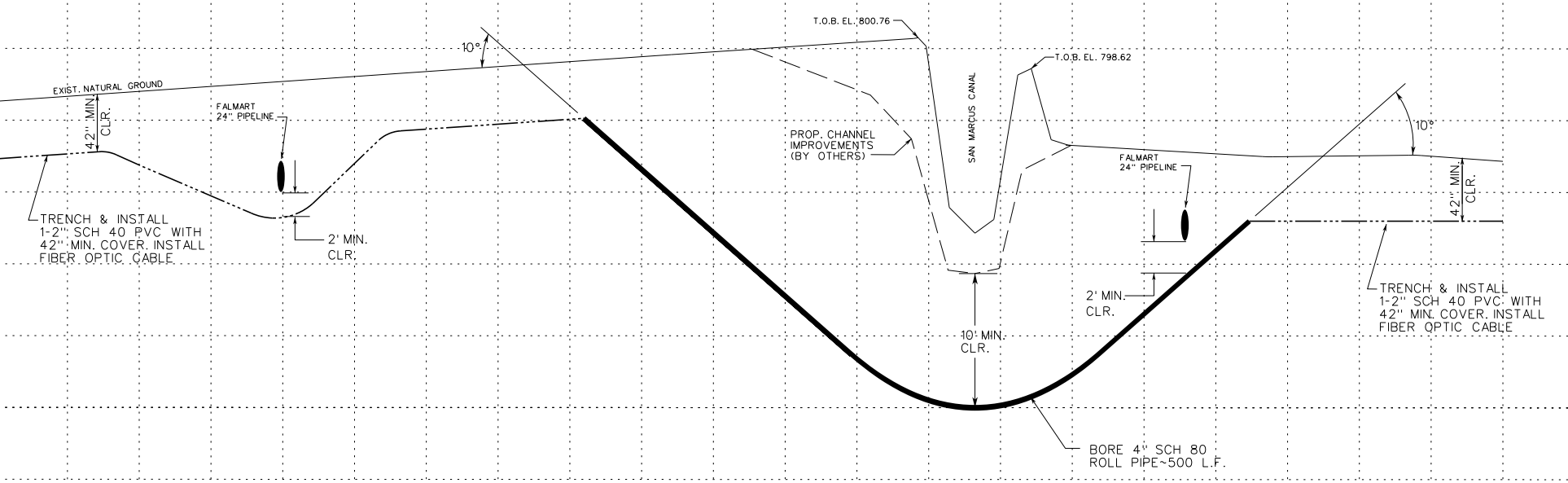
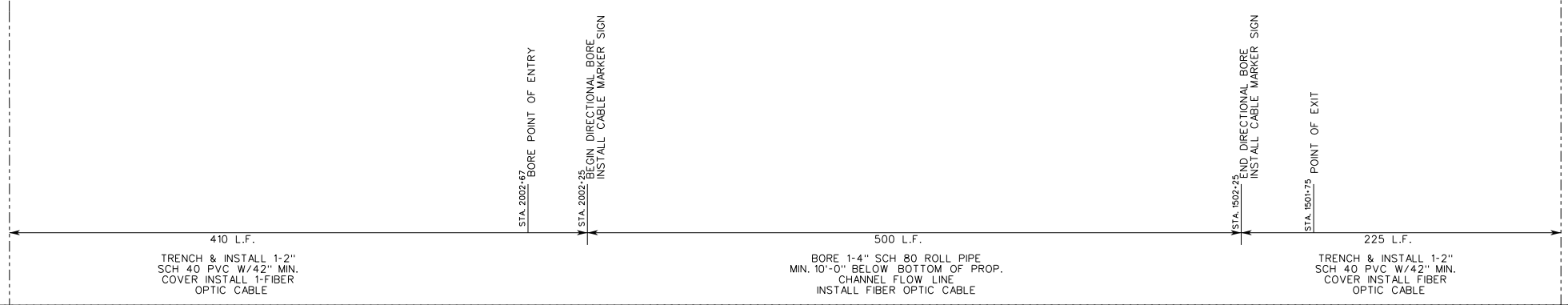
BORE 1-4" SCH. 80 PVC ROLL PIPE ~ 500 L.F.

ABC CO. 200' R.O.W.

MATCH LINE STA. 1500+00



TRENCH & INSTALL 1-2" SCH 40 PVC WITH 42" MIN. COVER. INSTALL FIBER OPTIC CABLE



LOOKING NORTH  
PROFILE  
SCALE: HORIZ. 1" = 50'  
VERT. 1" = 5'

**BENCHMARK:**

HGCS D 142, ELEV. +1026.3, REF. TO NAD 83, (GPS OBS GEOID99) 1.8 MILES EAST ALONG SAN MARCUS ROAD FROM INTERSECTION OF SAN MARCUS ROAD & STATE HIGHWAY 125 AT MARK TO LEFT INSIDE OF BARBED-WIRE FENCE OF "LUXINGTON RANCH."

**NOTES:**

1. ALL INFORMATION CONCERNING TYPE AND LOCATION OF UNDERGROUND UTILITIES IS NOT GUARANTEED TO BE ACCURATE OR ALL INCLUSIVE. THE CONTRACTOR IS RESPONSIBLE FOR MAKING HIS OWN DETERMINATIONS AS TO TYPE AND LOCATION OF UNDERGROUND UTILITIES AS MAY BE NECESSARY TO AVOID DAMAGE THERETO. THE CONTRACTOR SHALL VERIFY LOCATION OF UNDERGROUND PIPELINES, CONDUITS AND STRUCTURES BY CONTACTING OWNERS OF UNDERGROUND UTILITIES OR BY EXCAVATING IN ADVANCE OF CONSTRUCTION.
2. THE CONTRACTOR IS RESPONSIBLE FOR DETERMINING THE EXACT LOCATION OF ALL UTILITIES WHEN AND WHERE THEY FALL IN THE PATH OF CONSTRUCTION.
3. THE CONTRACTOR IS ALSO RESPONSIBLE FOR CONTACTING THE UTILITY COORDINATING COMMITTEE @ 713-223-4567 AND TEXAS ONE CALL @ 1-800-245-4545, FORTY-EIGHT (48) HOURS PRIOR TO ANY CONSTRUCTION.

**CONSTRUCTION UNIT SCHEDULE - PROJECT TOTALS**

ITEM	DESCRIPTION	UNIT	QUAN.	ITEM	DESCRIPTION	UNIT	QUAN.
1	2" SCH 40 PVC CONDUIT TRENCH	LF	625	13	AERIAL CABLE INSTALLATION	LF	
2	INSTALL FIBER IN EXIST. INNERDUCT	EA	14	14	GUY WIRE INSTALLATION	EA	
3	2" LONG RADIUS ELBOW	EA	15	15	GUY ANCHOR INSTALLATION	EA	
4	DIRECTIONAL BORE 4" SCH 80	LF	500	16	U-GUARD INSTALLATION	EA	
5	ABC CABLE MARKER SIGN & POST	EA	2	17	STEEL MESSENGER	LF	
6	AERIAL FIBER OPTIC CABLE REMOVAL	LF	18	18	4" RISER CONDUIT INSTALLATION	LF	
7	FIBER OPTIC CABLE (UNDERGROUND)	LF	1204	19	RIGHT-OF-CLEARANCE	LF	
8	SPLICING	EA	20	20	GALV. RISER POLE GUARD	LF	
9	PULLHOLE PLACEMENT	EA	21	21	INNERDUCT PLACEMENT (PULL 1-1/2")	LF	
10	PULLHOLE REMOVAL	EA	22	22	2 1/2" STEEL CASING	LF	
11	MANHOLE PENETRATION	EA	23				
12	POLE INSTALLATION	EA	24				

**CONTRACTORS' NOTES:**

- 1) THE LOCATION OF ALL UTILITIES INDICATED ON THE PLANS IS TAKEN FROM EXISTING PUBLIC RECORDS. THE EXACT LOCATION AND ELEVATION OF ALL PUBLIC UTILITIES MUST BE DETERMINED BY THE CONTRACTOR. IT SHALL BE THE DUTY OF THE CONTRACTOR TO ASCERTAIN WHETHER ANY ADDITIONAL FACILITIES OTHER THAN THOSE SHOWN ON THE PLAN MAY BE PRESENT.
- 2) EXISTING PAVEMENTS, CURBS, SIDEWALKS, AND DRIVEWAYS DAMAGED OR REMOVED DURING CONSTRUCTION SHALL BE REPLACED TO CITY OF SAN MARCUS VALLEY STANDARDS.
- 3) CONTRACTOR SHALL COMPLY WITH OSHA REGULATIONS AND STATE OF TEXAS LAW CONCERNING EXCAVATION, TRENCHING AND SHORING AS SPECIFIED IN CITY OF WEBSTER ORDINANCES.
- 4) USE 24" OF STABLE MATERIAL FROM WHERE THE ACTUAL BORE BEGINS OR ENDS TO 5' PAST THE STREET OR ROAD R.O.W. PROPERTY LINE. SEE TYPICAL DETAIL 12.
- 5) CONTRACTOR TO MAKE NECESSARY PRECAUTIONS TO PROTECT ROOT SYSTEMS OF SHRUBS, PLANTS AND TREES ALONG THE AREA OF EXCAVATION.
- 6) ADEQUATE DRAINAGE SHALL BE MAINTAINED AT ALL TIMES DURING CONSTRUCTION AND ANY DRAINAGE DITCH OR STRUCTURE DISTURBED DURING CONSTRUCTION SHALL BE RESTORED TO THE SATISFACTION OF THE OWNING AUTHORITY.

**CONFIDENTIAL**

THIS PRINT AND THE DESIGN DETAIL SHOWN THEREON IS THE PROPERTY OF GRANGER TELECOM CORPORATION. THIS PRINT IS FURNISHED WITH THE UNDERSTANDING THAT IT IS NOT TO BE REPRODUCED WITHOUT PERMISSION, AND MUST BE RETURNED UPON DEMAND. ALL RIGHTS OF DESIGN ARE RESERVED BY GRANGER TELECOM CORPORATION.

NO	DATE	DESCRIPTION	DWN	CHKD	APP
REVISIONS					

**GRANGER TELECOM CORPORATION**  
22 CORGEY RD., PLEASANTON, TX 78604  
PHONE: (830) 569-8088 FAX: (830) 569-8091

ABC COMPANY  
FIBER ROUTE RELOCATION  
PLAN & PROFILE  
STA. 1500+00 TO STA. 2002+35

DRAWN	DATE	SCALE	SHEET	REV
DWB	12/05/2007	H: 1"=50', V: 1"=5'	225 OF 300	0
DESIGN	DWG. NO.		CAD FILENAME:	
DWB				
CHKD	PROJECT NO.			
APPR				

KEYMAP \*1539AZ